

# APOLLO AE1206

## Solar Roll

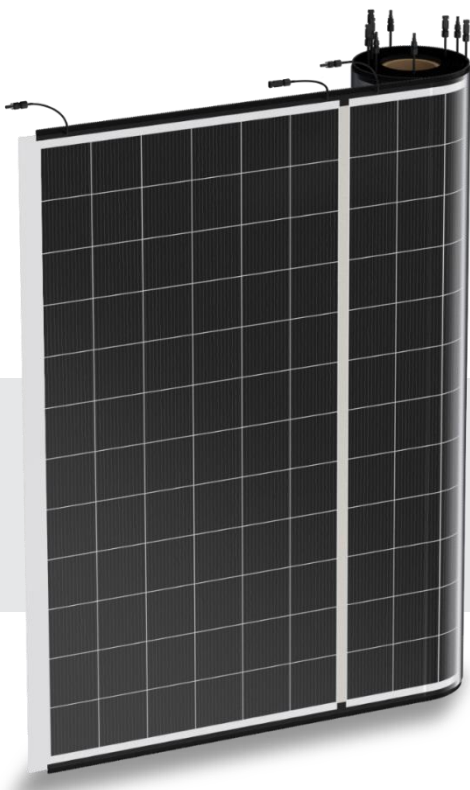
### FULLY FLEXIBLE

### ULTRA LIGHTWEIGHT

## Apollo Flexible Technology

Apollo develops and manufactures groundbreaking solutions and products in solar energy, destined to transform any surface under the sun into an electricity source.

Apollo Solar Roll is specifically designed to fit any lightweight structure with load limits or extra - curved surfaces.



↓ 80%

Reduction of total system weight

↓ 50%

Reduction of labor cost



#1 in efficiency per weight and durability

## CERTIFICATIONS AND TESTS

ISO9001:2015, Design, production and marketing flexible solar panels IEC61215 (2016), IEC61730 (2016) - In process

## MAIN BENEFITS & KEY FEATURES



**Durable and Reliable**  
Patented cell technology with enhanced micro-cracks tolerant, IP68 rated



**Efficient**  
High energy yield due to cell efficiency (16.75%)



**Ultra Lightweight**  
2.6 Kg/sqm, fits light structures with load limits



**Fully Flexible**  
Maintain the building's design with a module that fits the contour



**Fast Deployment**  
Easy to transport, load, and install in various methods, with no additional construction and lower labor costs



**Aesthetic Design**  
Customizable color (full black or transparent), and mounting design

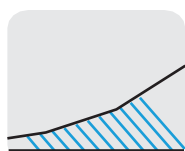
## ELECTRICAL SPECIFICATIONS AE1206

	Single module	Six module Roll		
		Series connection	Parallel connection	
STC 1,000 W/sqm, (25 ± 2)°C, AM 1.5				
Maximum Power (Pmax) ±5%	300	1800		W
Maximum Power Voltage (Vmp)	37.5	225	37.5	V
Maximum Power Current (Imp)	8	8	48	A
Open Circuit Voltage (Voc)	46.8	280.8	46.8	V
Short Circuit Current (Isc)	9.2	9.2	55.2	A
Maximum Series Fuse		15		A
Operating Temperature		(-40) - (+85)		C
Temperature coefficient Isc (α)		0.043		%/°C
Temperature coefficient Voc (β)		-0.29		%/°C
Temperature coefficient Pmax (γ)		-0.38		%/°C
Maximum System Voltage		600		Vdc

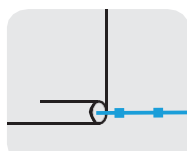
## MECHANICAL DATA AE1206

	Single module
Panel Type	72 Apollo cells (6X12)
Dimensions (mm)	2020X1000X2.6
Weight (Kg)	5.6±2%
Rolling Diameter (mm)	153±5
Exit Cables	Direct exit Front side or Junction Box - IP68 rated
Connector	Original MC4
Output Cables	4mm <sup>2</sup> (length - 35 cm)
Backside Material	POE
Frame	Framless module
Class (IEC 61730-1:2016)	Class II
Fire class (UL 61730, UL790)	C

## CUSTOMIZABLE INSTALLATION TECHNIQUES

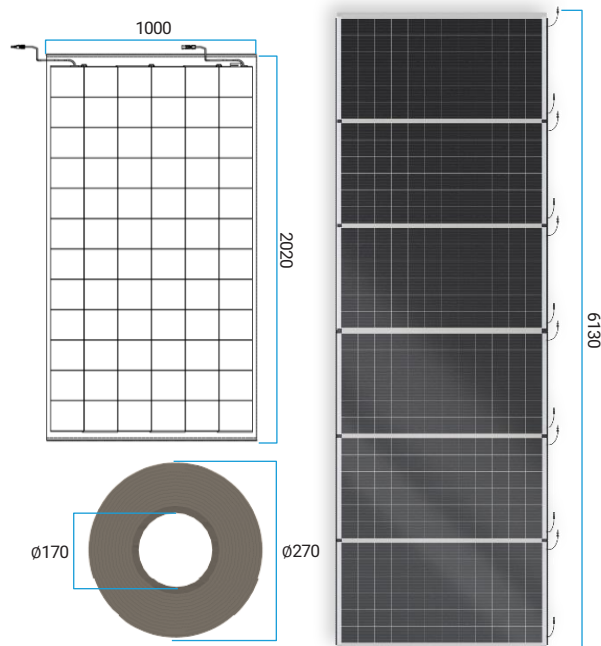


Durable Adhesive

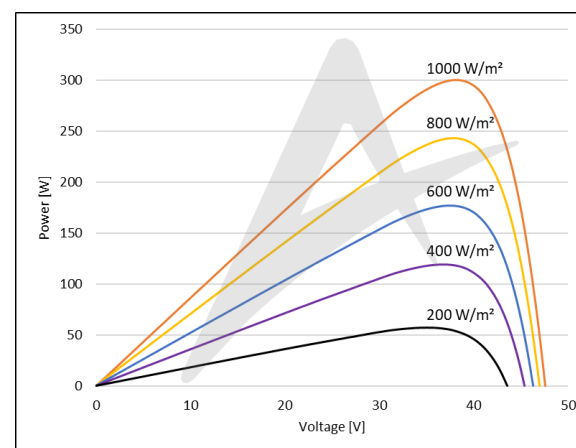
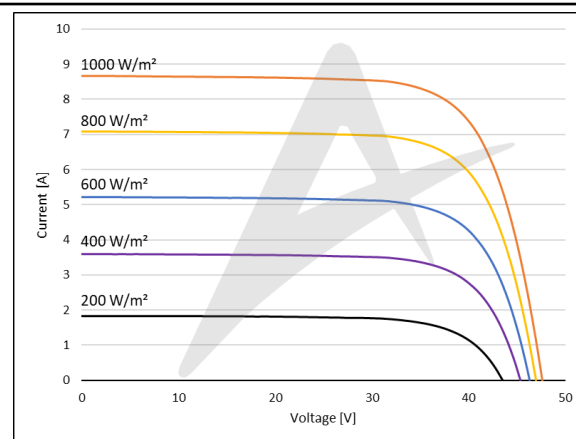


Bead Keder & Rail

## ENGINEERING DRAWINGS AE1206



## Performance Data AE1206



## GUARANTEED POWER

